

Portland
13 June 1974

DEAR PETE -

ONLY TRIP-RELATED EXPENSE IS 90% OF
FOOD AND BEER COST PLUS POSSIBLY ONE NIGHT
IN A MOTEL (AT MADRAS THURS NITE)

SUGGESTED EQUIP LIST FOLLOWS -

SLEEPING BAG & AIR MATTRESS

FISHING GEAR - CLOTH CONTAINER RATHER THAN METAL
BOX PREFERRED EXCEPT FOR POLE

OPTIONAL CAMERA

YOUR TENT IS GOOD IDEA

POCKET KNIFE

OPTIONAL FIRST AID KIT - SMALL - WITH SUN LOTION

FLASH LITE

DARK GLASSES WITH HEAD STRAP BESIDES REG. GLASSES

CLOTHES - 2 SETS - MINIMUM

2 LONG SLEEVE SHIRTS

2 PANTS (WORN OVER SWIM SUIT OR SHORT PANTS

BOOTS FOR LAND - TENNIS SHOES FOR SEA

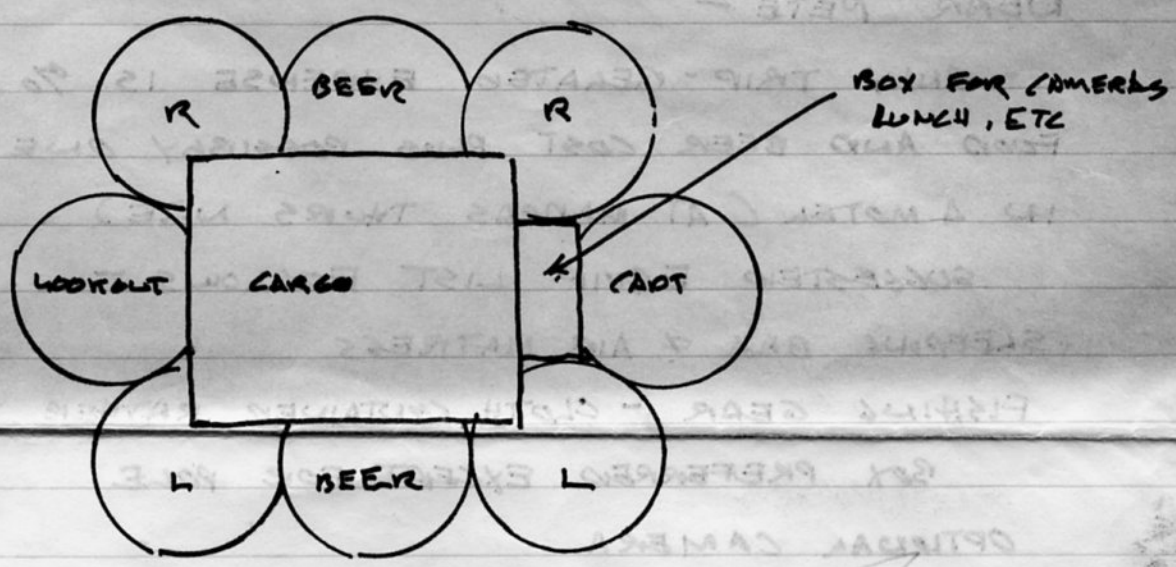
WIDE-BRIM HAT, IF YOU HAVE ONE - WITH TIE STRAP

PARKA OR SWEATER AND WINDBREAKER

WE PROVIDE 1 RAFT (SEE DIAGRAM), 1 OAR, 1
RUBBER BAL (APPROX 8" x 16" x 22"), 1 LIFE JACKET,
AND THE FAMOUS 10 MINUTE "REARIN RAPIDS
WALKER" COURSE ON HOW NOT TO FALL OFF AND
WHAT NOT TO DO, WHEN YOU DO. INSURANCE IS
EXTRA.

-JIM-

Portland
12 June 1974



[Scribbled-out area]

[Scribbled-out area]

R - RIGHT PADDLE

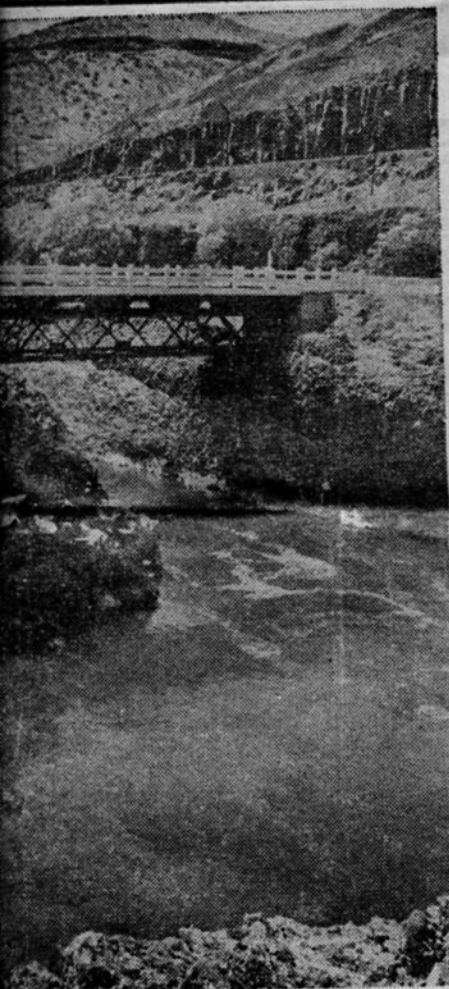
L - LEFT PADDLE

CAPT - THE GUY THAT SHOUTS "PADDLE ON THE RIGHT (OR LEFT)"
OR "ALL PADDLE LIKE CRAZY"!

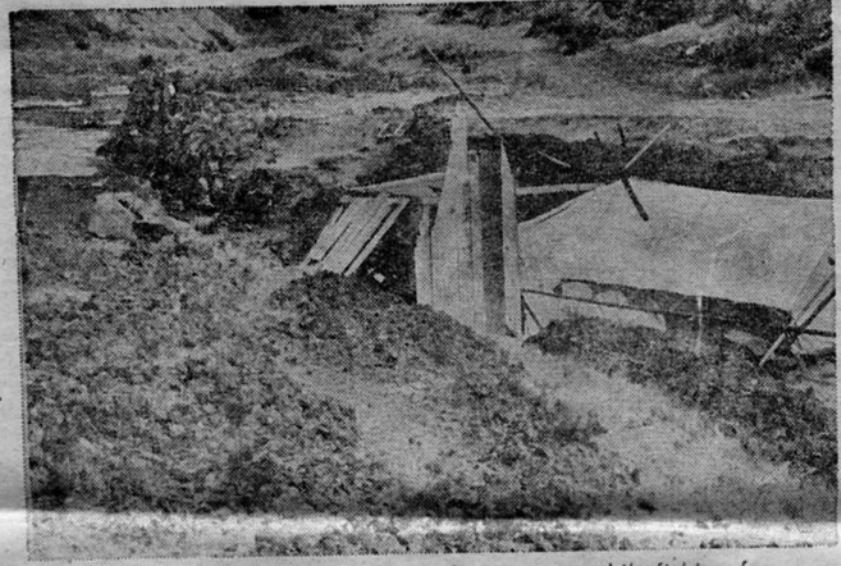
LOOKOUT - THE GUY THAT SEES THE ROCK UPON WHICH YOU
ARE STUCK BEFORE YOU GOT STUCK

BEER - BEER IN CANS IF AVAILABLE AND WINE IN
PLASTIC JUGS - AND GARBAGE CONTAINERS

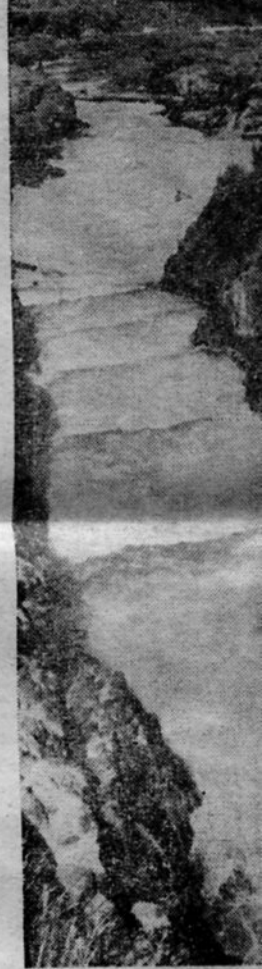
big screen
Leaders, Flies



Here Highway 216 crosses the river is a lookout point north of Maupin.



This camp was set up by the Indians to use while fishing for salmon on the Deschutes.



Sherars Falls near fish

PETE - WE'RE READY! LET ME KNOW ARRIVAL TIME

THE DESCHUTES: A great canoeing river

THOUGHT THIS WOULD INTEREST YOU

- JIM

arren
is truly one of
starts south of
and runs 238
regon's bounda-
river. The drift
the Pelton Dam
s enter where
the river near
97 miles to the
s ninety-seven
divided almost
ge where High-
ver. The barrier
at this point,
d. Drift boaters
upper and lower
tes. The upper
springs to any of
d with an arti-
blished in The
1969. Finally

this log was verified with U.S. Geological Survey maps and River mile indexes. We had almost a complete log before ever starting the trip and it was now only necessary to verify it.
We boated the 42 mile section in about eight hours and 42 minutes of drift time. The log in addition to including river mileage includes time. For this river stage the recorded time should be reasonably accurate for McKenzie drift boats. Boats that paddle would of course have faster times, but there are certain check points where a watch could be corrected and give reasonable accuracy. I find logged time a more convenient boating guide than maps or mileage.
for the major rapids only .03 mile downstream.
In my opinion the major rapids be-

low Trout Creek are for expert boaters. We witnessed decked canoes and rubber rafts come through these rapids without incident, but there was half of a fiberglass canoe on the bank as a reminder; these rapids can be dangerous. There is a small island at this point and one should take the right channel.
There is a significant rapids section at river mile 82.0 which is 0.3 mile

WATCH FOR TUNNEL
The railroad tunnel portal on the left at mile 66.1 is the warning for the next severe rapids (Buckskin Mary Rapids) at mile 65.4.

aint boat with a large hole in the bottom. The boater should have taken the deeper left channel. The United States Geological Survey, Kaskela, Oregon,

7.5 minute series map shows the rapids in this section in good detail.
The railroad tunnel portal on the left at mile 66.1 is the warning for the next severe rapids, (Buckskin Mary Rapids) at mile 65.4. You can hear this rapids as you approach in a straight section of the river. Although there are large standing waves in the rapids, it is negotiated with relative ease by most boats. Only a half mile downstream from Buckskin Mary Rapids is the start of a series of four major short rapids sections. Buckskin Mary Rapids and these four series rapids are all within about a 1.3 mile section.
The rest of the way to the boating sporting goods stores can refer one to the proper people. U.S.G.S. maps are available for this entire section.
There is much more that could be